

# Totalizers mechanic

Meter counters PTB approved

Display 5 digits, manual reset (zero) by lever

## M 410.A



M 410.A - PTB Meter counter

### Features

- PTB Meter counter, large
- Adding
- Display 5-digits
- Reset by lever

### Technical data - mechanical design

Function	PTB Meter counter
Display	White numbers on black Decimal digit with scale
Number of digits	5-digits
Digit height	7 mm
Zero setting	Manual by reset lever. Do not let snap or make jerky movements.
PTB approval	1.5 / 87.05
Count mode	Adding in a rotational direction to be indicated, subtracting in reverse direction. 2 revs. = 10 counts
Drive shaft	Both sides, $\varnothing 7$ mm
Measuring speed	<200,00 m/min (measuring wheel)
Measuring accuracy	1 cm
Measuring range	9999.99 m/cm
Ambient temperature	0...+60 °C
Housing type	Surface mount housing with mounting plate
Housing colour	Grey
Dimensions W x H x L	106 x 64 x 45 mm
Dimensions mounting plate	120 x 64 mm
Mounting	Base plate, 4 long mounting holes
Weight approx.	380 g
Materials	Housing: Hostaform POM, grey Base plate: steel zinc-coated

### Description

Meter counter M 410.A is calibrated by the German Physical-Technical Institute (PTB) and approved for calibrated measuring systems. However, our customers must apply for calibration of the whole measuring system at the corresponding calibration authorities.

# Totalizers mechanic

## Meter counters PTB approved

### Display 5 digits, manual reset (zero) by lever

M 410.A

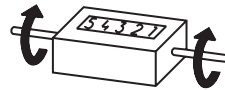
#### Part number

M 410.A0

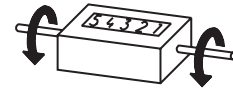
Display / direction of rotation

- 1 5 digits 9999.95 m, 2 revolutions  
= 10 digits / direction I
- 2 5 digits 9999.95 m, 2 revolutions  
= 10 digits / direction II

#### Direction of strokes and rotation



Away from user  
Sense of rotation I



Towards user  
Sense of rotation II

#### Accessories

##### Measuring wheels

MR512.07A Circumf. 50 cm, knurled aluminium

MR542.07D Circumf. 50 cm, smooth Hytrel TPE-E

MR552.07A Circumf. 50 cm, smooth Vulkollan PUR

MR562.07A Circumf. 50 cm, knopped rubber NBR Nitril

MR592.07D Circumf. 50 cm, grooved Hytrel TPE-E

#### Dimensions

